

05/05/2021

Street Trees – Hawke Street Huskisson

Years of pruning the existing Brush Box Trees located underneath the overhead powerlines in Hawke St has been detrimental to the health and amenity value of these trees.

Shoalhaven City Council has been working with Endeavour Energy and is proposing to remove the existing Brush Box trees and replace with a smaller native tree closer to the existing kerb away from the overhead powerlines.

Endeavour Energy will undertake the removal of the trees in Hawke Street and Shoalhaven City Council will follow through with the tree planting located approximately 2m from the kerb. Refer to attached plan 5525_05.

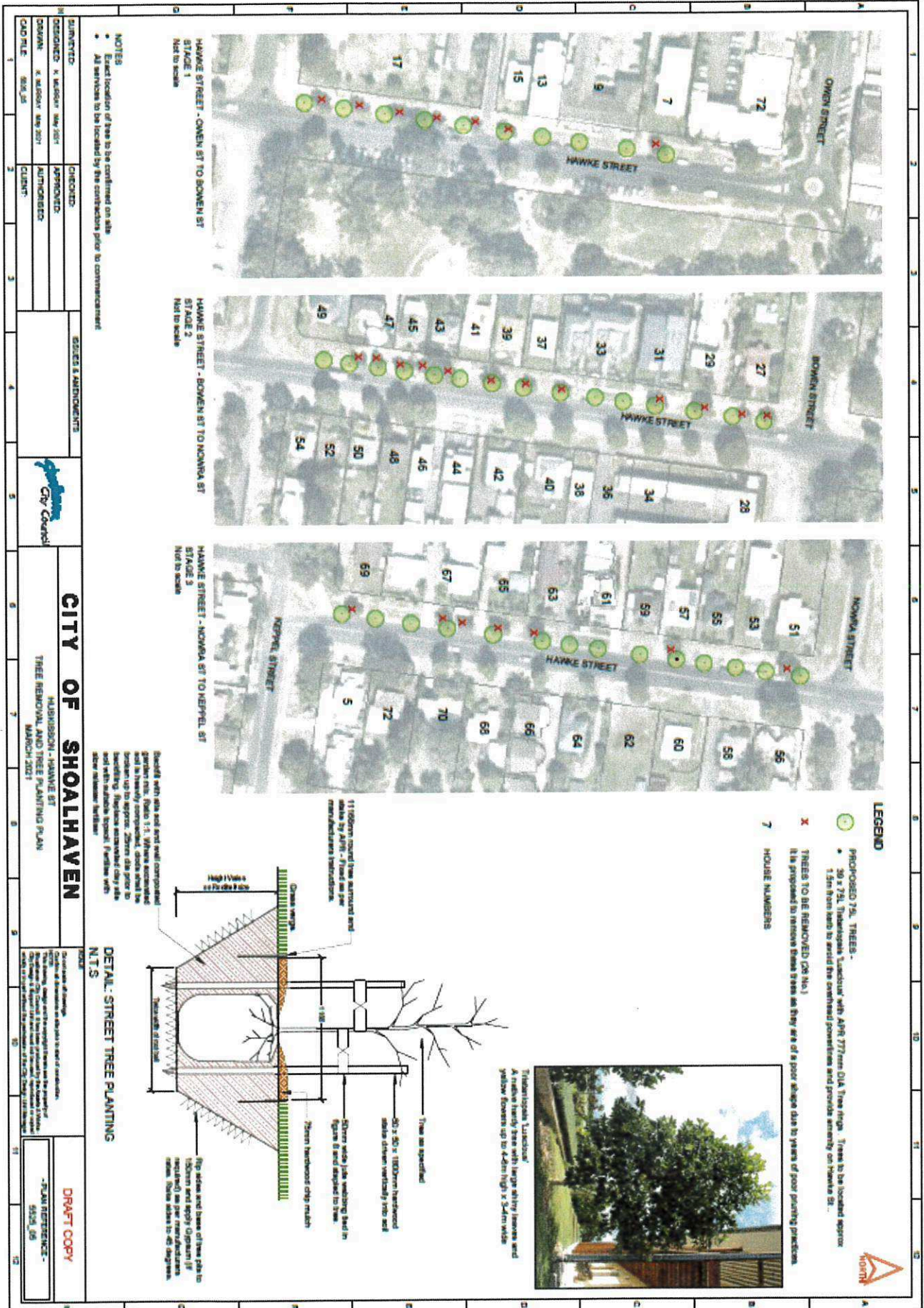
It is envisaged that this work will be undertaken in stages as budget permits and works are anticipated to commence early-mid June 2021.



If you need further information about this matter, please me on (02) 4429 3299. Please quote Council's reference 46307E (D21/183691).

Yours faithfully

Kay Murray
Landscape Architect



NOTES

- Exact location of tree to be confirmed on site
- All services to be located by the contractor prior to commencement

DESIGNED: K. WILSON - MAY 2017	APPROVED:
DRAWN: K. WILSON - MAY 2017	AUTHORISED:
CAD FILE: 2017_05_15	CLIENT:

SIZES & ADJUSTMENTS	

CITY OF SHOALHAVEN

HARRISON - HAWKE ST
TREE REMOVAL AND TREE PLANTING PLAN
MARCH 2021

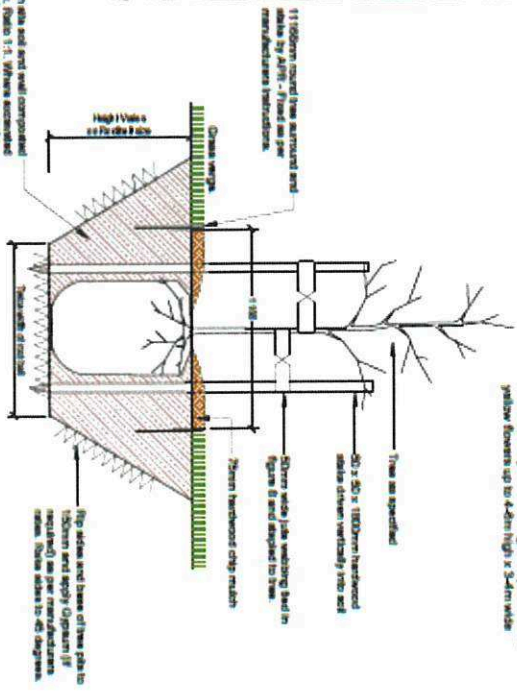
<p>DATE: 15/03/2021</p> <p>SCALE: 1:500</p> <p>PROJECT: HARRISON - HAWKE ST TREE REMOVAL AND TREE PLANTING PLAN</p> <p>DRAWN BY: K. WILSON</p> <p>CHECKED BY: K. WILSON</p>	<p>DRAFT COPY</p> <p>FOR REFERENCE - 5/25/21</p>
---	---

LEGEND

- PROPOSED 75L TREES - 90 x 75L Thunbergia lustrata with APR 277mm OIA. Tree frogs. Trees to be located approx 1.5m from kerb to avoid overhead powerlines and provide amenity on townside St.
- TREES TO BE REMOVED (see No.1)
- HOUSE NUMBERS



Thunbergia lustrata
A native hardy tree with large silvery leaves and yellow flowers up to 4.5m high x 3.4m wide



DETAIL: STREET TREE PLANTING
N.T.S.